

2024

Industrial Footwear

DieHard®

POWER AHEAD®



BOOT COMPANY

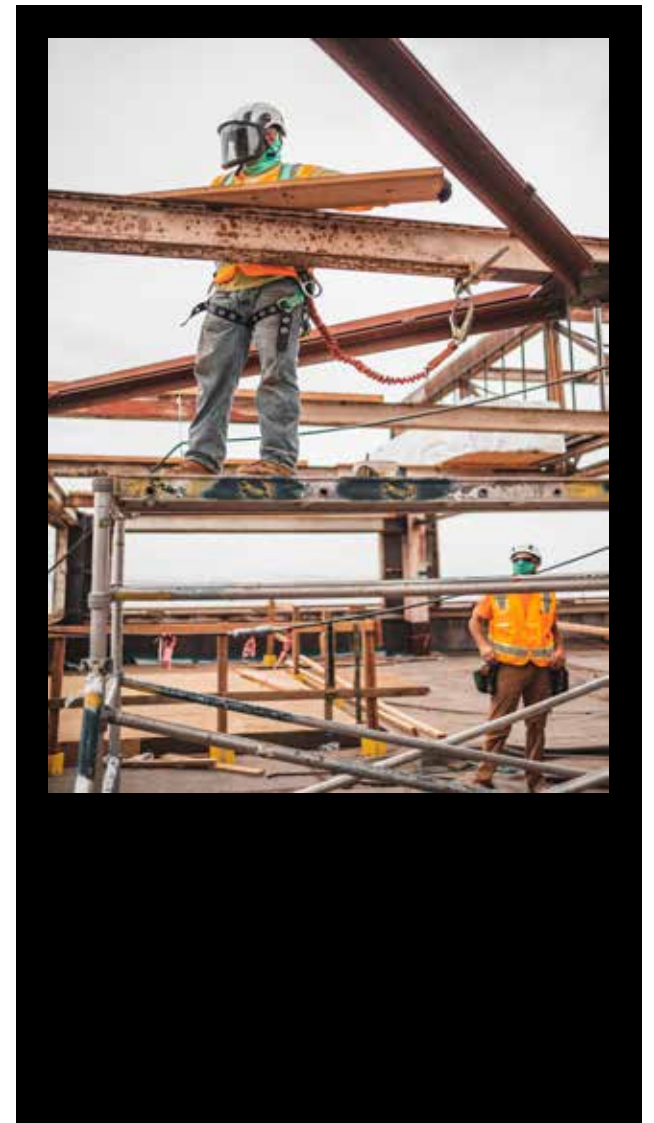


STYLE#	DESCRIPTION	PAGE	STYLE#	DESCRIPTION	PAGE
DIEHARD / SAFETY			DIEHARD / SOFT		
DH10715	/SOLSTICE/GREY/COMP.....	9	DH30100	/TORRENT/BLACK/SOFT.....	13
DH20100	/SOLSTICE/BLACK/COMP.....	9	DH50245	/COLT/RUST/SOFT.....	12
DH20122	/BONNEVILLE/BLACK/COMP.....	10	DH60112	/MONTE/DISTRESSED BROWN/SOFT.....	12
DH30104	/SUNBIRD/BLACK/COMP.....	9	DH60155	/VENTURA/BLACK/SOFT.....	14
DH30205	/SUNBIRD/BROWN/COMP.....	9	DH60157	/SHADOW/BLACK/SOFT.....	13
DH50115	/SQUIRE/BLACK/COMP.....	7	DH60420	/MALIBU 6"/RUST/SOFT.....	11
DH50124	/POLARA/BLACK/COMP.....	8	DH60885	/CHARGER/BROWN/SOFT.....	16
DH50200	/SQUIRE/BROWN/COMP.....	7	DH80420	/MALIBU 8"/RUST/SOFT.....	11
DH50500	/LEMANS/GREY/COMP.....	8	DH90250	/STRATUS/BROWN/SOFT.....	11
DH60100	/VENTURA/BLACK/COMP.....	8			
DH60216	/COMET/OLIVE/COMP.....	7			
DH60260	/CRUSADER/BURGUNDY/COMP.....	6			
DH60440	/MALIBU 6"/RUST/COMP.....	5			
DH60460	/MONTE /DARK BROWN/COMP.....	6			
DH60880	/CHARGER/WHEAT/COMP.....	10			
DH80440	/MALIBU 8"/RUST/COMP.....	5			
DH82997	/PILLAR/BLACK/COMP.....	10			



Index

DIEHARD BRAND	1
LEGACY COLLECTION (SAFETY TOE).....	5
TALLADEGA COLLECTION (SAFETY TOE)	7
BREAKTHROUGH COLLECTION (SAFETY TOE).....	9
LEGACY COLLECTION (SOFT TOE).....	11
BREAKTHROUGH COLLECTION (SOFT TOE).....	13
HOSS BOOTS / INDUSTRIAL FOOTWEAR	17
HEAVY DUTY	21
WESTERN BOOTS.....	27
OBLIQUE TOE.....	31
HIKERS	33
XRD MET GUARDS	39
XRD-SD MET GUARDS.....	41
STATIC DISSIPATIVE.....	42
ATHLETIC WORK.....	43
INSULATED.....	45
WOMEN'S	47
MOXIE TRADES	53



CONTACT US

888-990-4677

HOURS: MONDAY-FRIDAY 8AM-5PM EST

DIEHARDFOOTWEAR.COM

HOSSBOOTS.COM

EMAIL ORDERS: CSORDERS@HOSSBOOTCO.COM

This is our mantra. Powerful, durable, authentic, innovative... That's DieHard®

A brand that gives you the confidence to perform. If you're motivated by the powerful craving for new experiences, pushing boundaries and working until the job is done, then you are DieHard.

A footwear brand trusted to deliver quality, reliability, and unrivaled performance when and where it's needed. DieHard footwear is built to exceed expectations and provide confidence to handle any situation. Driven by a new look and attitude, the DieHard brand has been recharged with better materials, new looks and more comfort than ever.

BRAND LEGACY

Americans have trusted DieHard® to deliver exceptional performance and reliable products for over 50 years. Since its inception, DieHard has been at the forefront of innovation. The core of the brand's legacy is unrivaled performance in automotive batteries, which revolutionized the industry. Then in 1975, DieHard footwear was launched with the hard working customer in mind.

DieHard is growing to deliver products that reach new frontiers while still delivering the ultimate performance and dependable power customers have relied on since 1967.



PHOTOGRAPHY / CATALOG DESIGN BY RAY GAUTHIER

SAFETY FEATURES



COMPOSITE TOE
Composite toes contain non-metallic safety toe caps and are light. They are ideal for those working in electrical environments. They do not conduct heat or cold and are good for work in extreme high or low temperatures.



SOFT TOE
Some of our boots are made without a protective toe cap. These soft toe boots still may have other features such as, Electrical Hazard or Slip Resistance in the sole.



SLIP RESISTANT
Our outsoles marked slip resistant have been tested and meet or surpass industrial standards. Slip resistance has many variables. These tests are to be used as a guide to help make your decision. Test results are available upon request.



WATERPROOF
DieHard® uses membrane technology from HyDry® and others. Our boots are designed to resist water in wet situations as high as the membrane goes. Wear these with confidence that your feet will stay dry and comfortable.



MEMORY FOAM
Some of our boots include a memory foam insole that are constructed from soft polyurethane base with gel pressure point pads and a top layer of memory foam for all day comfort.



ELECTRICAL HAZARD
Electrical Hazard (EH) boots must be able to withstand 18000 volts of electricity at 60 hertz for a whole minute without leakage of more than one milliampere under dry conditions. DieHard® EH boots have been tested and pass this standard.



USA sourced leather.



New style introduction.



Some of our boots include a memory foam insole that are constructed from soft polyurethane base with a top layer of memory foam for all day comfort.



Safety Toe

LEGACY COLLECTION

MALIBU 6"



DH60440 RUST

TOE TYPE: CompositeToe
 UPPER: Premium Tumbled USA Leather With Genuine Hand Sewn One Piece Moc
 LINING: Leather
 FOOTBED: Removable Full Cushioned
 MIDSOLE: Soft Cushion P/U
 OUTSOLE: Long Wearing P/U
 CONSTRUCTION: Genuine Good Year Leather Welt
 SHANK: Composite
 ASTM F3445-21 Slip-resistant
 RATING: ASTM F2413-18 M/I/C EH
 SIZING: 7-12, 13, 14 D(M) 2E(W)



MALIBU 8"



DH80440 RUST

TOE TYPE: CompositeToe
 UPPER: Premium Tumbled USA Leather With Genuine Hand Sewn One Piece Moc
 LINING: Leather
 FOOTBED: Removable Full Cushioned
 MIDSOLE: Soft Cushion P/U
 OUTSOLE: Long Wearing P/U
 CONSTRUCTION: Genuine Good Year Leather Welt
 SHANK: Composite
 ASTM F3445-21 Slip-resistant
 RATING: ASTM F2413-18 M/I/C EH
 SIZING: 7-12, 13, 14 D(M) 2E(W)



Safety Toe

LEGACY COLLECTION

MONTE



DH60460 DARK BROWN

TOE TYPE: Composite Toe
 UPPER: Premium Oiled Leather
 LINING: Waterproof Membrane
 FOOTBED: Removable Full Cushioned
 OUTSOLE: Long Wearing P/U
 CONSTRUCTION: Genuine Good Year Leather Welt
 SHANK: Composite
 ASTM F3445-21 Slip-resistant
 RATING: ASTM F2413-18 M/I/C EH
 SIZING: 7-12, 13, 14 D(M) 2E(W)



CRUSADER



DH60260 BURGUNDY

TOE TYPE: Composite Toe
 UPPER: Premium Tumbled USA Leather
 LINING: Leather
 FOOTBED: Removable Full Cushioned
 MIDSOLE: Soft P/U
 OUTSOLE: Long Wearing Rubber
 CONSTRUCTION: Good Year Welt
 SHANK: Composite
 ASTM F3445-21 Slip-resistant
 RATING: ASTM F2413-18 M/I/C EH
 SIZING: 7-12, 13, 14 D(M) 2E(W)



Safety Toe

TALLADEGA COLLECTION

COMET

DH60216 OLIVE

TOE TYPE: Composite Toe
 UPPER: Oiled Nu-buck Leather
 LINING: Waterproof Membrane
 FOOTBED: Removable Full Cushioned
 MIDSOLE: Soft Density EVA
 OUTSOLE: Slip-Resistant Rubber
 CONSTRUCTION: Cement
 SHANK: Composite
 ASTM F3445-21 Slip-resistant
 RATING: ASTM F2413-18 M/I/C EH
 SIZING: 7-12, 13, 14 D(M) 2E(W)



SQUIRE

DH50200 BROWN

SIZING: 7-12, 13, 14 D(M) 2E(W)

DH50115 BLACK

SIZING: 7-12, 13, 14 D(M)

TOE TYPE: Composite Toe
 UPPER: Crazy Horse Leather
 LINING: Waterproof Membrane
 100% Non-Metallic
 FOOTBED: Removable Full Cushioned
 MIDSOLE: Soft Density EVA
 OUTSOLE: Slip-Resistant Rubber
 CONSTRUCTION: Cement
 SHANK: Composite
 ASTM F3445-21 Slip-resistant
 RATING: ASTM F2413-18 M/I/C EH



Safety Toe

TALLADEGA COLLECTION

LEMANS

DH50500 GREY

TOE TYPE: Composite Toe
 UPPER: Matrix Leather & Nylon
 LINING: Waterproof Hydry Membrane
 FOOTBED: Removable Full Cushioned
 MIDSOLE: Ultra Light Cushion Rebound P/U
 OUTSOLE: Slip-Resistant Rubber
 CONSTRUCTION: Cement
 SHANK: Composite
 ASTM F3445-21 Slip-resistant
 RATING: ASTM F2413-18 M/I/C EH
 SIZING: 7-12, 13, 14 D(M) 2E(W)



VENTURA

DH60100 BLACK

TOE TYPE: Composite Toe
 UPPER: Soft Full-Grain Leather
 LINING: Waterproof Hydry Membrane
 FOOTBED: Removable Full Cushioned
 MIDSOLE: Ultra-Light Cushion Rebound P/U
 OUTSOLE: Slip-Resistant Rubber
 CONSTRUCTION: Cement
 SHANK: Composite
 ASTM F3445-21 Slip-resistant
 RATING: ASTM F2413-18 M/I/C EH
 SIZING: 8-12, 13, 14 D(M) 2E(W)



POLARA

DH50124 BLACK

TOE TYPE: Composite Toe
 UPPER: Full-Grain Oiled Leather
 LINING: Breathable Mesh
 FOOTBED: Removable Full Cushioned
 OUTSOLE: Slip-Resistant 2 Density P/U
 CONSTRUCTION: Direct Attach
 SHANK: Composite
 ASTM F3445-21 Slip-resistant
 RATING: ASTM F2413-18 M/I/C EH
 SIZING: 7-12, 13, 14 D(M) 2E(W)



Safety Toe

BREAKTHROUGH COLLECTION

SOLSTICE

DH10715 GREY

TOE TYPE: Composite Toe
 UPPER: Suede and Fabric
 LINING: Moisture Wicking Mesh
 FOOTBED: Removable Full Cushioned
 MIDSOLE: Lightweight EVA
 OUTSOLE: Slip-Resistant Rubber
 CONSTRUCTION: Cement
 SHANK: Composite
 ASTM F3445-21 Slip-resistant
 RATING: ASTM F2413-18 M/I/C EH
 SIZING: 6-12, 13 D(M)
 SIZING: 8-12, 13 2E(W)



SOLSTICE

DH20100 BLACK

TOE TYPE: Composite Toe
 UPPER: Suede and Fabric
 LINING: Moisture Wicking Mesh
 FOOTBED: Removable Full Cushioned
 MIDSOLE: Lightweight EVA
 OUTSOLE: Slip-Resistant Rubber
 CONSTRUCTION: Cement
 SHANK: Composite
 ASTM F3445-21 Slip-resistant
 RATING: ASTM F2413-18 M/I/C EH
 SIZING: 6-12, 13 D(M)
 SIZING: 8-12, 13 2E(W)



SUNBIRD

DH30135 BLACK

DH30205 BROWN

TOE TYPE: Composite Toe
 UPPER: Full-Grain Tumbled Leather
 LINING: Moisture Wicking Mesh
 FOOTBED: Removable Full Cushioned
 MIDSOLE: Cushion Rebound EVA
 OUTSOLE: Slip-Resistant Rubber
 CONSTRUCTION: Cement
 SHANK: Composite
 ASTM F3445-21 Slip-resistant
 RATING: ASTM F2413-18 M/I/C EH
 SIZING: 6-12, 13, 14 D(M) 2E(W)



Safety Toe

BREAKTHROUGH COLLECTION

BONNEVILLE

DH20122 BLACK

TOE TYPE: Composite Toe
 UPPER: Nylon with TPU Overlay
 LINING: Moisture Wicking Mesh
 FOOTBED: Removable Full Cushioned
 MIDSOLE: Cushion Rebound EVA
 OUTSOLE: Slip-Resistant Rubber
 CONSTRUCTION: Cement
 SHANK: Composite
 ASTM F3445-21 Slip-resistant
 RATING: ASTM F2413-18 M/I/C EH
 SIZING: 5-13, 14 D(M)
 SIZING: 7-12, 13 2E(W)



PILLAR



DH82997 BLACK

TOE TYPE: Steel Toe
 UPPER: Full grain tumbled leather
 LINING: Moisture Wicking Mesh
 FOOTBED: Removable two density EVA
 MIDSOLE: EVA
 OUTSOLE: Rubber
 CONSTRUCTION: Cement
 SHANK: Composite
 RATING: ASTM F2413-17 M/I/C
 SIZING: 6-12, 13 D(M)
 SIZING: 7.5-11, 12, 13 2E(W)



CHARGER



DH60880 WHEAT

TOE TYPE: Composite Toe
 UPPER: Nubuck
 LINING: Moisture Wicking Mesh
 FOOTBED: Removable Full Cushioned
 MIDSOLE: EVA
 OUTSOLE: Slip-Resistant P/U
 CONSTRUCTION: Cement
 SHANK: Composite
 RATING: ASTM F2413-17 M/I/C EH
 SIZING: 6-12, 13 D(M)
 SIZING: 8-12, 13 2E(W)



Soft Toe

LEGACY COLLECTION

MALIBU 6"

DH60420 RUST



TOE TYPE: Soft Toe
 UPPER: Premium Tumbled USA Leather
 With Genuine Hand Sewn One Piece Moc
 LINING: Leather
 FOOTBED: Removable Full Cushioned
 MIDSOLE: Soft P/U
 OUTSOLE: Long Wearing P/U
 CONSTRUCTION: Genuine Good Year
 Leather Welt
 SHANK: Composite
 ASTM F3445-21 Slip-resistant
 RATING: ASTM F2892-18 EH
 SIZING: 6-12, 13, 14 D(M)
 8-12, 13, 14 2E(W)



MALIBU 8"

DH80420 RUST



TOE TYPE: Soft Toe
 UPPER: Premium Tumbled USA Leather
 With Genuine Hand Sewn One Piece Moc
 LINING: Leather
 FOOTBED: Removable Full Cushioned
 MIDSOLE: Soft P/U
 OUTSOLE: Long Wearing P/U
 CONSTRUCTION: Genuine Good Year
 Leather Welt
 SHANK: Composite
 ASTM F3445-21 Slip-resistant
 RATING: ASTM F2892-18 EH
 SIZING: 7-12, 13, 14, D(M)
 8-12, 13, 14 2E(W)



STRATUS

DH90250 BROWN



TOE TYPE: Soft Toe
 UPPER: Crazy Horse Leather with Nylon
 LINING: Waterproof Membrane
 FOOTBED: Removable Full Cushioned
 MIDSOLE: Soft P/U
 OUTSOLE: Long Wearing Rubber
 CONSTRUCTION: Good Year Welt
 SHANK: Composite
 RATING: ASTM F2892-18 EH
 SIZING: 7-12, 13, 14 D(M)
 8-12 2E(W)



Soft Toe

LEGACY COLLECTION

COLT



DH50245 DEER TAN

TOE TYPE: Soft Toe
 UPPER: Premium Tumbled Leather
 LINING: Leather
 FOOTBED: Removable Full Cushioned
 OUTSOLE: Long Wearing P/U
 CONSTRUCTION: Good Year Welt
 SHANK: Composite
 RATING: ASTM F2892-18 EH
 SIZING: 7-12, 13, 14 D(M)



MONTE



DH60112 DISTRESSED BROWN

TOE TYPE: Soft Toe
 UPPER: Distressed Leather
 LINING: Waterproof Membrane
 FOOTBED: Removable Full Cushioned
 OUTSOLE: Long Wearing P/U
 CONSTRUCTION: Good Year Welt
 SHANK: Composite
 ASTM F3445-21 Slip-resistant
 RATING: ASTM F2892-18 EH
 SIZING: 7-12, 13, 14 D(M) 2E(W)



Soft Toe

BREAKTHROUGH COLLECTION

TORRENT

DH30100 BLACK

TOE TYPE: Soft Toe
 UPPER: Nu-buck with Matrix Leather
 LINING: Breathable Mesh
 FOOTBED: Removable Full Cushioned
 MIDSOLE: Ultra-Light Cushion Rebound P/U
 OUTSOLE: Slip-Resistant Rubber
 CONSTRUCTION: Cement
 SHANK: Composite
 ASTM F3445-21 Slip-resistant
 RATING: ASTM F2892-18 EH
 SIZING: 8-12, 13, 14 D(M) 2E(W)



SHADOW

DH60157 BLACK

TOE TYPE: Soft Toe
 UPPER: Heavy Duty Nylon/TPU Overlay
 LINING: Waterproof Membrane
 FOOTBED: Removable Full Cushioned
 MIDSOLE: Light Weight EVA
 OUTSOLE: Slip-Resistant Rubber
 CONSTRUCTION: Cement
 SHANK: Composite
 ASTM F3445-21 Slip-resistant
 RATING: ASTM F2892-18 EH
 SIZING: 6-12, 13, 14 D(M)



Soft Toe

BREAKTHROUGH COLLECTION

VENTURA

DH60155 BLACK

TOE TYPE: Soft Toe
 UPPER: Soft Full-Grain Leather
 LINING: Waterproof Membrane with Moisture Wicking Mesh
 FOOTBED: Removable Full Cushioned
 MIDSOLE: Ultra-Light Cushion Rebound P/U
 OUTSOLE: Slip-Resistant Rubber
 CONSTRUCTION: Cement
 SHANK: Composite
 ASTM F3445-21 Slip-resistant
 RATING: ASTM F2892-18 EH
 SIZING: 8-12, 13, 14 D(M) 2E(W)



CHARGER

DH60885 BROWN

TOE TYPE: Soft Toe
 UPPER: Nubuck
 LINING: Moisture Wicking Mesh
 FOOTBED: Removable Full Cushioned
 OUTSOLE: Slip-Resistant P/U
 CONSTRUCTION: Cement
 SHANK: Composite
 RATING: ASTM F2413-18 M/I/C EH
 SIZING: 6-12, 13 D(M)
 SIZING: 8-12, 13 2E(W)



Outsoles

**CRUSADER
STRATUS**



Soft P/U midsole rubber outsole with 90 degree defined heel.

MALIBU



Soft P/U Long-wearing P/U dual density wedge.

COLT



Single density P/U wedge.

MONTE



Long-wearing P/U.

SQUIRE



Soft EVA midsole & high slip-resistance rubber outsole.

POLARA



Direct attach dual density P/U outsole for flexibility and durability.

COMET



Soft EVA midsole with aggressive slip-resistant rubber outsole.

PILLAR



EVA Midsole.

CHARGER



Slip-Resistant P/U.

SHADOW



Soft lightweight EVA midsole and rubber outsole with high slip-resistance.

SOLSTICE



EVA midsole with slip-resistance rubber outsole.

**LEMANS
VENTURA
TORRENT**



ETPU midsole with a durable rubber outsole.

**SUNBIRD
BONNEVILLE**



Lightweight slip-and oil-resistant outsole with EVA midsole.

VALIANT



Tough heavy duty rubber outsole with a light weight EVA midsole.

DieHard
POWER AHEAD

POINT OF PURCHASE DISPLAYS



POINT OF PURCHASE BRANDING





HOSS BOOTS / INDUSTRIAL FOOTWEAR	19	OBLIQUE TOE	31
HEAVY DUTY	21	50138/ERIC LO/BLACK/STEEL.....	31
60108/RANGE 6"/BLACK/COMP.....	22	50230/ERIC LO/BROWN/SOFT.....	31
60113/CARSON 6"/BLACK/COMP.....	21	50238/ERIC LO/BROWN/STEEL.....	31
60145/BRONC 6"/BLACK/COMP.....	24	50239/ERIC HI/BROWN/STEEL.....	32
60215/SCOUT/BROWN/STEEL.....	23	50250/ERIC HI/BROWN/SOFT.....	32
60413/CARSON 6"/BROWN/COMP.....	21	60203/STOMP 6"/BROWN/STEEL.....	32
60414/CARSON 6"/BROWN/SOFT.....	21		
60690/HOG/BROWN/COMP.....	26	HIKERS	33
60892/HOG/WHEAT/COMP.....	26	50172 /WATCHMAN/BLACK/COMP.....	38
61110/RANGE 6"/BROWN/COMP.....	22	50251 /TRACKER/BROWN/COMP.....	37
61172/RANGE 6"/BROWN/SOFT.....	22	50406 /FRONTIER/BROWN.....	38
62705/K-TOUGH 6"/BROWN/COMP.....	22	53023 /TRAIL/GREY/COMP.....	37
80114/CROSS CUT 8" KILTIE/BLACK/COMP.....	25	60117 /LORNE 6"/BLACK/COMP.....	33
80715/CROSS CUT 8" KILTIE/BROWN/COMP.....	25	60122 /ADAM 6"/BLACK/STEEL.....	34
90211/BUFORD LOGGER PULL ON/BROWN/COMP.....	25	60130 /RIDGE/BLACK/COMP.....	37
90215/CARTWRIGHT II WELLINGTON/BROWN/COMP.....	23	60160 /CARTER/BLACK/COMP.....	34
90216/CARTWRIGHT II WELLINGTON/BROWN/SOFT.....	23	60177 /TIKABOO /BLACK/COMP.....	35
90260/RANGER PULL ON/GOLDEN BROWN/COMP.....	26	60230 /RIDGE/BROWN/COMP.....	37
90416/BUCK PULL ON/BROWN/STEEL.....	23	60260/TRVERSE/BROWN/COMP.....	38
90690/RANGER PULL ON/BROWN/COMP.....	26	60267 /TICKER/BROWN/COMP.....	36
94010/WILDFIRE/BROWN/COMP.....	24	60406 /TIKABOO/BROWN/COMP.....	35
		60416 /LORNE 6"/BROWN/COMP.....	33
WESTERN BOOTS	27	60421 /ADAM 6"/BROWN/STEEL.....	34
91065 /RUSHMORE/CHARCOAL/COMP.....	28	60473 /LORNE 6"/BROWN/SOFT.....	33
92029 /LANDON/DARK GREEN/STEEL.....	29	60542 /CARTER/BROWN/COMP.....	34
92030 /HUNCH/NAVY/COMP.....	30	60877 /TICKER/WHEAT/COMP.....	36
92042 /SHOWDOWN/BROWN/COMP.....	30		
92045 /LANDON/COGNAC RED/STEEL.....	29		
92046 /LANDON/DARK BROWN/SOFT.....	29		
92048 /LANDON/COGNAC RED/SOFT.....	29		
92060 /RUSHMORE/BROWN/SOFT.....	28		
92065 /RUSHMORE/BROWN/COMP.....	28		
94021 /WE THE PEOPLE/BROWN/COMP.....	27		
94022 /WE THE PEOPLE/BROWN/COMP.....	27		

Index

XRD MET GUARDS	39	INSULATED	45
30402/WORKER SLIP ON MET/BROWN/COMP.....	40	60100/CHILLER/BLACK/COMP.....	46
30404/LACER MET/BROWN/COMP.....	40	60150/BLIZZARD/BROWN/SOFT.....	45
60140/PROWL MET /BLACK/COMP.....	40	60242/BLAST/BROWN/COMP.....	45
90691/SLAG MET/BROWN/COMP.....	39	60466/HUDSON/BROWN/COMP.....	45
94030/FRACKER MET/BROWN/COMP.....	39	60700/CHILLER/NAVY/COMP.....	46
XRD-SD MET GUARDS	41	WOMEN'S	47
30240/STEPPER MET/BROWN/COMP.....	41	20230/RENO II/BLACK/COMP.....	47
60240/TIKABOO MET/BROWN/COMP.....	41	24533/EXPRESS/BLACK/FUSCHIA/COMP.....	47
		70120/LACY/BLACK/COMP.....	48
STATIC DISSIPATIVE	42	70419/LACY/BROWN/COMP.....	48
10167/SPARKS SD/BLACK/COMP.....	42	70423/LILY/BROWN/STEEL.....	48
53010/CHASER SD/GREY/COMP.....	42	93025/ADAH/TAN BROWN/SOFT.....	49
		93050/RUSHMORE/BLACK/SOFT.....	49
ATHLETIC WORK	43	93060/RUSHMORE/BROWN/SOFT.....	49
10229/RENO II/BLACK/COMP.....	43		
13032/EXPRESS/GREY/COMP.....	43	INSOLE GUIDE	50
14431/EXPRESS/BLACK/BLUE/COMP.....	43		
30155/METEORITE/BLACK/COMP.....	43	OUTSOLES	51
50147/FULL COURT/BLACK/COMP.....	44		
50148/FULL COURT/NAVY/COMP.....	44	POINT OF PURCHASE	52
50152/RIM FLY/BLACK/RED/COMP.....	44		



ABOUT US

About Us

HOSS Boot Company was founded with the belief that hard working men and women want more choices when it comes to selecting footwear for work. Our carefully crafted work boots and work shoes use the best materials possible to keep you safe while on the job.

HOSS has recently expanded its family of brands by acquiring the licensing for DieHard footwear. Moxie Trades women's work brand completes the group. We are excited for the future of these brands.

We continue to source globally with leathers from Argentina, Brazil and the USA as well as other countries. We have also diversified manufacturing to include India and Brazil. This allows us to never again have the sourcing crunch everyone experienced over the past two years.

The HOSS team has decades of experience at all levels from customer service to warehouse sourcing, sales and operations. We are here to help solve your business needs and mutually grow together.

Our goal is to build long term relationships with our retail partners resulting in brands that the customer comes back for over and over.

CONTACT US

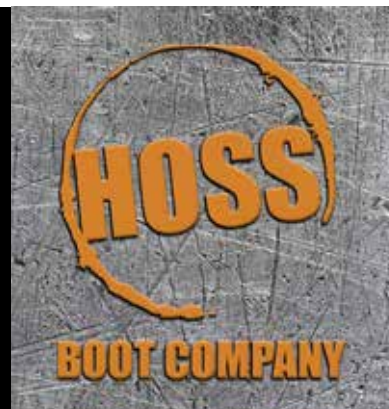
888-990-4677

HOURS: MONDAY-FRIDAY 8AM-5PM EST

DIEHARDFOOTWEAR.COM

HOSSBOOTS.COM

EMAIL ORDERS: CSORDERS@HOSSBOOTCO.COM



HOSS ICON GUIDE

ALL SAFETY FOOTWEAR PRODUCED BY HOSS BOOT COMPANY
MEETS OR EXCEEDS ASTM F2413-18 STANDARDS



Composite toes contain non-metallic safety toe caps and are light. They are ideal for those working in electrical environments. They do not conduct heat or cold and are good for work in extreme high or low temperatures.



Steel safety toes are the industry standard and have been for years. Steel toes provide protection from falling objects and equipment.



Aluminum toes are made of lightweight materials and tend to be about 30 to 50 percent lighter than steel. Toe boxes provide the same level of safety as steel offer a bit more room than composite since aluminum is thinner than composite.



Lighter than traditional safety toe protection, the Carbon Nano toes guard your feet against impact and compression hazards



Some of our boots are made without a protective toe cap. These soft toe boots still may have other features such as, Electrical Hazard or Static Dissipation ratings and puncture plates in the sole.



HOSS uses membrane technology from HyDry® and others. Our boots are designed to resist water in wet situations as high as the membrane goes. Wear these with confidence that your feet will stay dry and comfortable.



Some of our boots include a memory foam insole that are constructed from soft polyurethane base and a top layer of memory foam for all day comfort.



Our outsoles marked slip resistant have been tested and meet or surpass industrial standards. Slip resistance has many variables. These tests are to be used as a guide to help make your decision. Test results are available upon request.



Electrical Hazard (EH) boots must be able to withstand 18000 volts of electricity at 60 hertz for a whole minute without leakage of more than one milliampere under dry conditions. HOSS EH boots have been tested and pass this standard.



Our Static Dissipating (SD) feature allows electric current to flow between you and the ground. HOSS SD boots meet all ASTM requirements.



Our flexible puncture resistant plate allows full sole coverage, as well as greater movement. This midsole plate is designed to reduce the hazards of puncture wounds caused by sharp objects penetrating the outsole.



MetGuard™ is a shield made with XRD® Impact Protection technology. It overlays the toe box and runs to the top of the instep, providing armor-like protection for the foot.



HOSS uses 3M Thinsulate® insulation. Insulation can come in 200 grams and up. This is used in cold temperatures. Whether working outdoors or in a freezer, 3M Thinsulate helps keep your feet warm.



Sizes larger than 15 or widths from 4E to 6E



New style introduced

HEAVY DUTY

CARSON

**BIG
HOSS
SIZES**

60413 BROWN

- Composite safety toe
- Full-grain tumbled leather
- Suede tongue and padded comfort collar
- Ergonomic insole with contoured fast rebound foam
- Direct attach welt with slip and oil-resistant rubber outsole
- Composite shank
- ASTM F3445-21 Slip-resistant
- ASTM F2413-18 M/I/C EH
- Sizes 7-13, 14, 15, 16, 17, 18 D(M), 2E(W), 4E(XW) and 6E(XXW)
- (12.5 Available)



60414 BROWN (SOFT TOE)

- Soft toe
- ASTM F2892-18 EH
- Sizes 7-13, 14, 15, 16, 17, 18 D(M), 2E(W), 4E(XW) and 6E(XXW)



CARSON

**BIG
HOSS
SIZES**

60113 BLACK

- Composite safety toe
- Full-grain tumbled leather
- Suede tongue and padded comfort collar
- Ergonomic insole with contoured fast rebound foam
- Direct attach welt with slip and oil-resistant rubber outsole
- Composite shank
- ASTM F3445-21 Slip-resistant
- ASTM F2413-18 M/I/C EH
- Sizes 8-12, 13, 14, 15, 16, 17, 18 D(M), 2E(W), 4E(XW) and 6E(XXW)



K-TOUGH

62705 BROWN

**BIG
HOSS
SIZES**



- Composite safety toe
- Full-grain leather
- HyDry® waterproof membrane
- Aramid fiber vamp that is abrasion, cut and chemical resistant designed to keep you safe in tough environments
- Ergonomic insole with contoured fast rebound foam
- High-abrasion TPU molded toe and kick off heel
- Puncture-resistant midsole
- Direct attach welt with slip and oil-resistant rubber outsole
- Composite shank
- ASTM F3445-21 Slip-resistant
- ASTM F2413-18 M/I/C EH, PR
- Sizes 7-12, 13, 14, 15, 16, 17 D(M), 2E(W), 4E (XW) and 6E(XXW)



RANGE

61110 BROWN

**BIG
HOSS
SIZES**



- Composite safety toe
- Full-grain leather
- HyDry® waterproof membrane
- Ergonomic insole with contoured fast rebound foam
- Ankle-busting protection with foam-backed rubber to absorb impact
- High-abrasion TPU molded toe and kick off heel
- Puncture-resistant midsole
- Direct attach welt with slip and oil-resistant rubber outsole
- Composite shank
- ASTM F3445-21 Slip-resistant
- ASTM F2413-18 M/I/C EH, PR
- Sizes 7-13, 14, 15, 16, 17, 18 D(M) and 2E(W) (12.5 Available)



Heel Kick Off

61172 BROWN (SOFT TOE)

- Soft toe
- ASTM F2892-18 EH, PR
- Sizes 7-13, 14, 15, 16, 17 D(M) and 2E(W)



CARTWRIGHT II WELLINGTON



90215 BROWN

- Composite safety toe
- Full-grain success leather
- 10" Shaft height for wide calf
- HyDry® waterproof membrane
- Ergonomic insole with contoured soft-rebound foam
- High-abrasion TPU molded toe and heel kick
- Puncture-resistant midsole
- Direct attach welted and slip- and oil-resistant rubber outsole
- Composite shank
- ASTM F3445-21 Slip-resistant
- ASTM F2413-18 M/I/C EH, PR
- Sizes 7-12, 13, 14, 15, 16, 17, 18 D(M), 2E(W), 4E(XW) and 6E(XXW)

BIG HOSS SIZES



90216 BROWN

- ASTM F2892-18 EH, PR
- Sizes 7-12, 13, 14, 15, 16, 17, 18 D(M), 2E(W), 4E(XW) and 6E(XXW)



SCOUT

60215 BROWN

- Steel Safety Toe
- Full-grain leather and tough nylon
- Padded suede collar for comfort
- Premium P/U cushion insole
- Goodyear welted construction P/U outsole
- Composite shank
- ASTM F3445-21 Slip-resistant
- Meets ASTM F2413-18 M/I/C EH
- Sizes 7-12, 13, 14, 15, 16, 17, 18 D(M) & 2E(W)

BIG HOSS SIZES



BUCK WELLINGTON

90416 BROWN

- Steel safety Toe
- Full-grain leather and tough 11" nylon shaft
- Moisture wicking mesh lining
- Pull handles for easy fit
- Premium P/U insole
- Goodyear welted construction with slip resistant P/U outsole
- Composite shank
- ASTM F3445-21 Slip-resistant
- ASTM F2413-18 M/I/C EH
- Sizes 7-12, 13, 14, 15, 16, 17, 18 D(M) & 2E(W)

BIG HOSS SIZES



BRONC



60145 BLACK

- Composite safety toe
- Full-grain leather
- 100% non-metallic
- Suede tongue with padded collar
- HyDry® waterproof membrane
- Ergonomic insole with contoured soft rebound foam
- Reflective side panel
- TPU toe bumper
- Lenzi® puncture-resistant midsole
- Goodyear® 4x4 high abrasion outsole
- ASTM F2413-18 M/I/C EH, PR
- Sizes 8-12, 13, 14 D(M), 2E(W), 6E(XXW)

BIG HOSS SIZES



WILDFIRE WELLINGTON



94010 BROWN

- Composite safety toe
- Full-grain leather
- Pull handles for easy fit
- Waterproof membrane
- Premium P/U cushion insole
- Puncture-resistant midsole
- EVA midsole
- Slip-resistant rubber outsole
- Composite shank
- ASTM F3445-21 Slip-resistant
- ASTM F2413-18 M/I/C EH PR
- Sizes 7-12, 13, 14 D(M) and 2E(W)



CROSS CUT LOGGER

80715 BROWN

- Composite safety toe
- Crazy horse leather
- Waterproof membrane
- Contoured cushion insole
- Non-metallic hardware
- Triple ridge steel shank
- Puncture-resistant midsole
- Goodyear Welt Construction
- HOSS logger high abrasion rubber outsole
- ASTM F2413-18 M/I/C EH, PR
- Sizes 7-12, 13, 14, 15 D(M) and 2E(W)



80114 BLACK

- Composite safety toe
- Crazy horse leather
- Non-metallic hardware
- Waterproof membrane
- Contoured cushion insole
- Triple ridge steel shank
- Puncture-resistant midsole
- Goodyear Welt Construction
- HOSS logger high abrasion rubber outsole
- ASTM F2413-18 M/I/C EH, PR
- Sizes 7-12, 13, 14, 15 D(M) and 2E(W)



BUFORD LOGGER PULL ON

90211 BROWN

- Composite safety toe
- Full-grain leather
- Contoured cushion insole
- Waterproof membrane
- Pull on handle for easy fit
- Triple ridge steel shank
- Puncture-resistant midsole
- Goodyear Welt Construction
- HOSS rubber logger high abrasion outsole
- ASTM F2413-18 M/I/C EH, PR
- Sizes 7-12, 13, 14, 15 D(M) and 2E(W)



HOG 60892 WHEAT

- Composite safety toe
- Full-grain nubuck leather and suede
- Suede gusset & collar
- HyDry® waterproof membrane
- Premium P/U memory foam insole
- High-abrasion TPU molded toe and heel kick
- Direct attach welted
- EVA midsole
- Slip-resistant rubber outsole
- ASTM F3445-21 Slip-resistant
- Meets ASTM F2413-18 M/I/C EH
- Sizes 8-12, 13, 14 D(M) & 2E(W)

60690 BROWN

- Composite safety toe
- Full-grain oiled leather and suede
- Suede gusset & collar
- HyDry® waterproof membrane
- Premium P/U memory foam insole
- High-abrasion TPU molded toe and heel kick
- Direct attach welted
- EVA midsole
- Slip-resistant rubber outsole
- ASTM F3445-21 Slip-resistant
- Meets ASTM F2413-18 M/I/C EH
- Sizes 8-12, 13, 14 D(M) & 2E(W)



RANGER WELLINGTON

90690 BROWN

- Composite safety toe
- Full-grain leather with nylon shaft
- Internal ankle padded lock support
- HyDry® waterproof membrane
- Premium P/U memory foam insole
- Bumper toe for tough jobs
- Pull handles for easy fitting
- 10.5" shaft height
- Direct attach welted
- EVA midsole
- Slip-resistant rubber outsole
- ASTM F3445-21 Slip-resistant
- Meets ASTM F2413-18 M/I/C EH
- Sizes 8-12, 13, 14 D(M) and 2E(W)



90260 GOLDEN BROWN

- Composite safety toe
- Full-grain oiled caramel leather
- HyDry® waterproof membrane
- Slip-resistant rubber outsole
- ASTM F3445-21 Slip-resistant
- Meets ASTM F2413-18 M/I/C EH
- Sizes 8-12, 13, 14 D(M) and 2E(W)

WESTERN BOOTS

WE THE PEOPLE

94021 BROWN (COMP TOE)

- Composite safety toe
- Premium crazy horse leather
- Pull handles for easy fit
- Waterproof membrane with moisture wicking mesh
- Premium P/U memory foam insole
- Combination welt construction with phylon midsole
- Slip-resistant rubber outsole
- ASTM F3445-21 Slip-resistant
- ASTM F2413-18 M/I/C EH
- Sizes 7-12, 13, 14 D(M) and 2E(W)



WE THE PEOPLE

94022 BROWN (SOFT TOE)

- Soft toe
- Premium crazy horse leather
- Pull handles for easy fit
- Waterproof membrane with moisture wicking mesh
- Premium P/U memory foam insole
- Combination welt construction with phylon midsole
- Slip-resistant rubber outsole
- ASTM F3445-21 Slip-resistant
- ASTM F2413-18 EH
- Sizes 7-12, 13, 14 D(M) and 2E(W)



RUSHMORE

92065 BROWN

- Composite safety toe
- Full-grain cow rancher vamp with leather shaft
- Pull handles for easy fit
- Waterproof membrane with moisture wicking mesh
- Premium P/U memory foam insole
- Puncture resistant plate
- Goodyear welted construction with EVA midsole
- Slip-resistant rubber outsole
- ASTM F3445-21 Slip-resistant
- ASTM F2413-18 M/I/C EH PR
- Sizes 7-12,13,14,15,16,17,18 D(M) and 2E(W)

BIG HOSS SIZES



RUSHMORE (SOFT TOE)

92060 BROWN

- ASTM F2892-18 EH PR
- Sizes 7-12,13,14,15,16,17,18 D(M) and 2E(W)



RUSHMORE

91065 CHARCOAL

- Composite safety toe
- Full-grain cow rancher vamp with leather shaft
- Pull handles for easy fit
- Waterproof membrane with moisture wicking mesh
- Premium P/U memory foam insole
- Puncture resistant plate
- Goodyear welted construction with EVA midsole
- Slip-resistant rubber outsole
- ASTM F3445-21 Slip-resistant
- ASTM F2413-18 M/I/C EH PR
- Sizes 7-12,13,14,15,16,17,18 D(M) and 2E(W)

BIG HOSS SIZES



LANDON

92045 COGNAC/RED

- Steel safety toe
- Full-grain cow cognac vamp
- Honcho red 11" leather shaft
- Moisture wicking mesh lining
- Premium P/U memory foam insole
- Cemented construction with EVA midsole
- Slip-resistant rubber outsole
- ASTM F3445-21 Slip-resistant
- ASTM F2413-18 M/I/C EH
- Sizes 7-12,13,14,15,16,17 D(M) and 2E(W)



BIG HOSS SIZES



LANDON (SOFT TOE)

92048 COGNAC/RED

- Soft toe
- ASTM F2892-18 EH
- Sizes 7-12,13,14,15,16,17 D(M) and 2E(W)



LANDON (SOFT TOE)

92046 BROWN

- Soft toe
- Full-grain dark brown leather vamp
- Honcho red 11" leather shaft
- Moisture Wicking Mesh Lining
- Pull handles for easy fit
- Premium P/U memory foam insole
- Cemented welted construction with EVA midsole
- Slip-resistant rubber outsole
- ASTM F3445-21 Slip-resistant
- ASTM F2892-18 EH
- Sizes 7-12,13,14,15,16,17 D(M) and 2E(W)



BIG HOSS SIZES



SHOWDOWN

92042 BROWN

- Composite safety toe
- Full-grain cow vamp
- 11" leather shaft
- Waterproof membrane with moisture wicking mesh
- Premium P/U memory foam insole
- Goodyear welted construction with EVA midsole
- Slip-resistant rubber outsole
- Puncture resistant plate
- ASTM F3445-21 Slip-resistant
- ASTM F2413-18 M/I/C EH PR
- Sizes 7-12,13,14,15,16,17 D(M) and 2E(W)



BIG HOSS SIZES



HUNCH

92030 GREY/NAVY

- Composite safety toe
- Full-grain cow grey vamp
- 11" leather shaft
- Moisture wicking mesh lining
- Premium P/U memory foam insole
- Cemented construction with EVA midsole
- Slip-resistant rubber outsole
- ASTM F3445-21 Slip-resistant
- ASTM F2413-18 M/I/C EH
- Sizes 8-12,13,14 D(M) and 2E(W)



OBLIQUE TOE

MADE FOR THE WIDE FOOT GUY

ERIC LO

50238 BROWN

**BIG
HOSS
SIZES**

- Oblique aluminum safety toe
- Full-grain leather and nylon upper with high-abrasion toe
- Fast rebound super cushion insole
- Unique rebound compound sole to give bounce in step
- Cement construction wedge for support
- Slip-resistant rubber outsole
- Composite shank
- ASTM F3445-21 Slip-resistant
- ASTM F2413-18 M/I/C EH
- Sizes 7-12, 13, 14, 15, 16, 17 2E(W), 4E(XW) and 6E(XXW)



ERIC LO SOFT TOE

50230 BROWN

- Soft toe
- ASTM F2892-18 EH
- Sizes 7-12, 13, 14, 15, 16, 17 4E(XW) and 6E(XXW)



ERIC LO

50138 BLACK

**BIG
HOSS
SIZES**

- Oblique aluminum safety toe
- Full-grain leather and nylon upper with high-abrasion toe
- Fast rebound super cushion insole
- Unique rebound compound sole to give bounce in step
- Cement construction wedge for support
- Slip-resistant rubber outsole
- ASTM F3445-21 Slip-resistant
- Composite shank
- ASTM F2413-18 M/I/C EH
- Sizes 7-12, 13, 14, 15, 16, 17 4E(XW) and 6E(XXW)



ERIC HI

50239 BROWN

**BIG
HOSS
SIZES**

- Oblique aluminum safety toe
- Full-grain crazy horse leather and nylon upper with high-abrasion toe
- Fast rebound super cushion insole
- Unique rebound compound sole to give bounce in step
- Cement construction wedge for support
- Composite shank
- Slip-resistant rubber outsole
- ASTM F3445-21 Slip-resistant
- ASTM F2413-18 M/I/C EH
- Sizes 7-12, 13, 14, 15, 16, 17 2E(W), 4E(XW) and 6E(XXW)



ERIC HI (SOFT TOE)

50250 BROWN

- Soft toe
- ASTM F2892-18 EH
- Sizes 7-12, 13, 14, 15, 16, 17 4E(XW) and 6E(XXW)



STOMP

60203 BROWN

**BIG
HOSS
SIZES**

- Oblique aluminum safety toe
- Full-grain leather with high-abrasion toe
- HyDry® waterproof membrane
- Fast rebound super cushion insole
- Unique rebound compound sole to give bounce in step
- Cement construction wedge for support
- Composite shank
- Slip-resistant rubber outsole
- ASTM F3445-21 Slip-resistant
- ASTM F2413-18 M/I/C EH
- Sizes 7-12, 13, 14, 15, 16, 17 2E(W), 4E(XW) and 6E(XXW)



HIKERS

LORNE



60117 BLACK

60416 BROWN

- Composite safety toe
- Full-grain tumbled success leather
- Reflective lace loops and side panel
- Suede tongue and soft padded comfort collar
- HyDry® waterproof membrane
- Premium P/U memory foam insole
- Puncture-resistant midsole
- Direct attach dual density slip-resistant outsole well suited for environments with oil, water and various chemicals on the floor
- ASTM F3445-21 Slip-resistant
- ASTM F2413-18 M/I/C EH PR
- Sizes 6-13, 14, 15 D(M) and 2E(W) (12.5 Available)



LORNE (SOFT TOE)

60473 BROWN



- Soft toe
- Full-grain tumbled success leather
- Suede tongue and padded comfort collar
- HyDry® waterproof membrane
- Fast rebound super cushion insole
- Puncture-resistant midsole
- Direct attach dual density slip-resistant outsole well suited for environments with oil, water and various chemicals on the floor
- ASTM F3445-21 Slip-resistant
- ASTM F2892-18 EH PR
- Sizes 7-12, 13, 14 D(M) and 2E(W)



CARTER

60542 BROWN

60160 BLACK

- Steel safety toe
- Full-grain leather with tough nylon side panels
- Light weight, only 1 lb 6.6 oz per boot
- Fast rebound super cushion insole
- Direct attach dual density slip resistant outsole well suited for environments with oil, water and various chemicals on the floor
- ASTM F3445-21 Slip-resistant
- ASTM F2413-18 M/I/C EH
- Sizes 7-12, 13, 14 D(M) and 2E(W)



ADAM

60122 BLACK

60421 BROWN

- Steel safety toe
- Full-grain crazy horse leather
- HyDry® waterproof membrane
- Fast rebound insole
- Direct attach dual density slip-resistant outsole well suited for environments with oil, water and various chemicals on the floor
- ASTM F3445-21 Slip-resistant
- ASTM F2413-18 M/I/C EH
- Sizes 7-13, 14, 15 D(M) and 2E(W)
- (12.5 Available)



TIKABOO

60177 BLACK

60406 BROWN

- Composite safety toe
- Full-grain soft tumbled leather with nylon
- Suede tongue and padded comfort collar
- Waterproof membrane
- Premium P/U memory foam insole
- EVA midsole
- Slip-resistant rubber outsole
- 20 oz per boot
- Includes a free second pair of fast rebound super cushion insoles
- ASTM F3445-21 Slip-resistant
- ASTM F2413-18 M/I/C EH
- Sizes 6-12, 13, 14, 15 D(M) and 2E(W)



TICKER

60267 BROWN

- Composite safety toe
- Full-grain leather
- Suede tongue and padded comfort collar
- Waterproof membrane
- Premium P/U memory foam insole
- EVA midsole
- Slip-resistant rubber outsole
- 20 oz per boot
- Includes a free second pair of fast rebound super cushion insoles
- ASTM F3445-21 Slip-resistant
- ASTM F2413-18 M/I/C EH
- Sizes 6-12, 13, 14, 15 D(M) and 2E(W)



60877 WHEAT

- Composite safety toe
- Full-grain nubuck leather
- Suede tongue and padded comfort collar
- Waterproof membrane
- Premium P/U memory foam insole
- EVA midsole
- Slip-resistant rubber outsole
- 20 oz per boot
- Includes a free second pair of fast rebound super cushion insoles
- ASTM F3445-21 Slip-resistant
- ASTM F2413-18 M/I/C EH
- Sizes 8-12, 13, 14, 15 D(M) and 2E(W)



TRAIL

53023 GREY

- Composite safety toe
- Action leather and mesh
- Waterproof membrane
- EVA midsole
- Rubber outsole with aggressive tread
- Fast rebound super cushion insole
- Composite shank
- ASTM F2413-18 M/I/C EH
- Sizes 7-12, 13, 14 D(M) and 2E(W)



TRACKER

50251 BROWN

- Composite safety toe
- 100% Non-metallic
- Full-grain crazy horse leather
- HyDry® waterproof membrane
- Rubber outsole with EVA mid sole
- Fast rebound super cushion insole
- TPU support system gives extra rigidity for extra support
- Composite shank
- ASTM F2413-18 M/I/C EH
- Sizes 7-13, 14 D(M) and 2E(W)
- (12.5 Available)



RIDGE

60230 BROWN

60130 BLACK

- Composite safety toe
- Full-grain leather
- Non metallic eyelet hooks
- Waterproof membrane
- Premium P/U cushion insole
- Puncture-resistant midsole
- EVA midsole
- Slip-resistant rubber outsole
- Composite shank
- ASTM F3445-21 Slip-resistant
- ASTM F2413-18 M/I/C EH PR
- Sizes 7-12, 13 D(M) and 2E(W)



FRONTIER

50406 BROWN

- Composite safety toe
- Crazy horse leather
- HyDry® waterproof membrane
- EVA midsole
- Slip-resistant rubber outsole
- Fast rebound super cushion insole
- Composite shank
- ASTM F2413-18 M/I/C EH PR
- Sizes 5,6,7-12, 13, 14, 15 D(M)
- Sizes 7-12, 13, 14 2E(W)



TRAVERSE

60260 BROWN

- Composite safety toe
- Full-grain tumbled leather
- Suede tongue and padded collar
- Triple stitched sand leather toe wrap
- HyDry® waterproof membrane
- Premium P/U memory foam insole
- Puncture-resistant midsole
- Direct attach P/U midsole with cushioning heel system
- Slip resistant rubber outsole
- ASTM F3445-21 Slip-resistant
- ASTM F2413-18 M/I/C EH PR
- Sizes 7-12, 13, 14 D(M) 2E(W)



WATCHMAN

50172 BLACK

- Composite safety toe
- Leather and heavy duty nylon
- Suede collar and padded tongue
- Light weight, only 1lb 4.7 oz per boot
- Fast rebound super cushion insole
- YKK Side zipper
- Direct attach outsole for flexibility
- ASTM F3445-21 Slip-resistant
- ASTM F2413-18 M/I/C EH
- Sizes 6-12, 13, 14, 15
- D(M) and 2E(W)



XRD MET GUARDS

SLAG MET

90691 BROWN

- Composite safety toe
- Premium leather with heat resistant thread
- Internal XRD met guard for your protection
- Waterproof membrane
- Full cushioned P/U insole
- Puncture-resistant
- EVA midsole
- Long wearing rubber outsole
- Composite shank
- ASTM F3445-21 Slip-resistant
- ASTM F2413-18 M/I/C EH PR MT
- Sizes 7-12, 13 D(M) and 2E(W)



FRACKER MET

94030 BROWN

- Composite safety toe
- Premium leather
- Internal XRD met guard for your protection
- Waterproof membrane
- Premium P/U memory foam insole
- Puncture-resistant
- EVA midsole
- Good year welt
- Long wearing rubber outsole
- Composite shank
- ASTM F2413-18 M/I/C EH PR MT
- Sizes 7-12, 13, 14 D(M) and 2E(W)



PROWL MET

60140 BLACK

- Composite safety toe
- Full-grain leather
- 100% Non-metallic
- Internal XRD met guard
- HyDry® waterproof membrane
- Puncture-resistant plate
- Direct attach dual density slip-resistant outsole well suited for environments with oil, water and various chemicals on the floor
- ASTM F3445-21 Slip-resistant
- ASTM F2413-18 M/I/C EH PR MT
- Sizes 8-12, 13, 14 D(M) and 2E(W)



WORKER SLIP ON MET

30402 BROWN

- Composite safety toe
- Full-grain tumbled leather
- Padded suede comfort collar
- Premium P/U memory foam insole
- Internal XRD met guard
- Direct attach dual density slip-resistant outsole well suited for environments with oil, water and various chemicals on the floor
- ASTM F3445-21 Slip-resistant
- ASTM F2413-18 M/I/C EH MT
- Dual Gender Sizing 4-12, 13, 14 D(M)



LACER MET

30404 BROWN

- Composite safety toe
- Full-grain tumbled leather
- Suede padded tongue and collar for comfort
- Premium P/U memory foam insole
- Internal XRD met guard
- Direct attach dual density slip-resistant outsole well suited for environments with oil, water and various chemicals on the floor
- ASTM F3445-21 Slip-resistant
- ASTM F2413-18 M/I/C EH MT
- Dual Gender Sizing 4-12, 13, 14 D(M)



XRD-SD MET GUARDS

STATIC DISSIPATIVE

TIKABOO MET



60240 BROWN

- Composite safety toe
- Full-grain tumbled leather with nylon
- 17.5 oz per shoe
- Padded tongue and collar for comfort
- Premium P/U memory foam insole
- Internal XRD met guard
- Soft density EVA midsole
- Slip resistant rubber outsole
- ASTM F3445-21 Slip-resistant
- ASTM F2413-18 M/I/C SD 35 MT
- Dual Gender Sizing 4-12, 13, 14
- D(M) and 2E(W)



STEPPER MET



30240 BROWN

- Composite safety toe
- Full-grain tumbled leather with nylon
- 15.9 oz per shoe
- Padded tongue and collar for comfort
- Premium P/U memory foam insole
- Internal XRD met guard
- Soft density EVA midsole
- Slip-resistant rubber outsole
- ASTM F3445-21 Slip-resistant
- ASTM F2413-18 M/I/C SD 35 MT
- Dual Gender Sizing 3-12, 13, 14
- D(M) and 2E(W)



SPARKS



10167 BLACK

- Composite safety toe
- Mesh and microfiber
- 100% Non-metallic
- Fast rebound super cushion insole
- Lightweight slip-and oil-resistant outsole with EVA midsole
- ASTM F3445-21 Slip-resistant
- ASTM F2413-18 M/I/C SD 35
- Sizes 7-12, 13, 14 D(M) and (2E)W



CHASER



53010 GREY

- Composite safety toe
- Grooved leather and microfiber
- 100% Non-metallic
- Fast rebound super cushion insole
- EVA midsole with TPU support system
- Rubber outsole
- ASTM F2413-18 M/I/C SD 35
- Sizes 7-12, 13, 14 D(M) and (2E)W



ATHLETIC WORK

METEORITE

30155 BLACK

- Composite safety toe
- Microfiber and mesh
- Extremely light at 12.1 oz. per pair
- Fast rebound super cushion insole
- Composite shank
- Soft density EVA
- Slip-resistant rubber outsole
- ASTM F3445-21 Slip-resistant
- ASTM F2413-18 M/I/C EH
- Sizes 8-12, 13, 14 D(M) & 2E(W)



EXPRESS

13032 GREY

14431 BLACK BLUE

- Composite safety toe
- Microfiber leather and nylon mesh with printed overlay
- 100% Non-metallic cement construction
- Extremely light at 14.8oz. per pair
- Fast rebound super cushion insole
- Unique blend of compounds gives bounce in step and absorbs shock
- Composite shank
- Highly slip-resistant carbon rubber outsole
- ASTM F2413-18 M/I/C EH
- Extra matching laces in box
- Sizes 7-13, 14 D(M) & 2E(W)
- (12.5 Available)



RENO II

10229 BLACK

- Composite safety toe
- 100% Non-metallic
- Action leather and nylon mesh upper
- Waterproof membrane
- Fast rebound super cushion insole
- Cement construction
- Highly slip-resistant carbon rubber outsole
- Composite shank
- Mens ASTM F2413-18 M/I/C EH
- Women's ASTM F2413-18 F/I/C EH
- Men's Sizes 7-13, 14, 15 D(M) & 2E(W)
- (12.5 Available)



FULL COURT

50148 NAVY

50147 BLACK

- Composite safety toe
- Extremely light safety basketball style
- (Navy) Mesh and microfiber
- (Black) Mesh and black patent leather
- Weighing 2 lbs. per pair
- Form fitting neoprene internal construction
- Easy on lace/zipper combination
- Fast rebound super cushion insole
- Composite shank
- Slip-resistant rubber outsole
- ASTM F2413-18 M/I/C EH
- Sizes 7-12, 13, 14, 15 D(M) & 2E(W)



RIM FLY

50152 BLACK RED

- Composite safety toe
- TPU overlay and poly fly knit
- Extremely light safety basketball style
- Weighing 2 lbs. per pair
- 100% Non-metallic cement construction
- Fast rebound super cushion insole
- Unique blend of compounds gives bounce in step and absorbs shock
- Composite shank
- Slip-resistant rubber outsole
- ASTM F2413-18 M/I/C EH
- Sizes 7-13, 14, 15 D(M) & 2E(W)
- (12.5 Available)



INSULATED COLD STORAGE FOOTWEAR

BLAST

60242 BROWN

- Composite safety toe
- Full-grain leather
- HyDry® waterproof membrane
- Premium P/U memory foam insole
- 400 gram Thinsulate®
- EVA midsole
- Slip-resistant rubber outsole with special ice gripping plugs for slip resistance on multiple surfaces
- ASTM F3445-21 Slip-resistant
- ASTM F2413-18 M/I/C EH
- Sizes 8-12, 13, 14, 15 D(M) and 2E(W)



BLIZZARD

60150 BROWN

- Soft toe
- Soft full-grain oily brown leather
- HyDry® waterproof membrane
- Premium P/U memory foam insole
- 400 gram Thinsulate®
- Slip-resistant rubber outsole with special ice gripping plugs for slip resistance on multiple surfaces
- ASTM F3445-21 Slip-resistant
- ASTM-F2892-18 EH
- Sizes 8-12, 13, 14, D(M) and 2E(W)



HUDSON

60466 BROWN

- Composite safety toe
- Soft full-grain oily brown leather
- HyDry® waterproof membrane
- Premium P/U memory foam insole
- 400 gram Thinsulate®
- Slip-resistant rubber outsole with P/U midsole
- Puncture-resistant midsole
- ASTM F3445-21 Slip-resistant
- ASTM F2413-18 M/I/C EH, PR
- Sizes 8-12, 13, 14 D(M) and 2E(W)



CHILLER

60100 BLACK

- Composite safety toe
- Nubuck leather with soft mesh tongue
- HyDry® waterproof membrane
- Premium P/U memory foam insole
- 600 gram Thinsulate®
- Slip-resistant rubber outsole with special ice gripping plugs for slip resistance on multiple surfaces
- ASTM F3445-21 Slip-resistant
- ASTM F2413-18 M/I/C EH
- Sizes 8-12, 13, 14 D(M) and 2E(W)



CHILLER

60700 BLUE

- Composite safety toe
- Nubuck leather with soft mesh tongue
- HyDry® waterproof membrane
- Premium P/U memory foam insole
- 200 gram Thinsulate®
- EVA midsole
- Slip-resistant rubber outsole with special ice gripping plugs for slip resistance on multiple surfaces
- ASTM F3445-21 Slip-resistant
- ASTM F2413-18 M/I/C EH
- Sizes 8-12, 13, 14 D(M) and 2E(W)



WOMEN'S

EXPRESS

24533 BLACK FUCHSIA

- Composite safety toe
- 100% Non-metallic cement construction
- Microfiber leather and nylon mesh with printed overlay
- Extremely light at 14.8oz. per pair
- Fast rebound super cushion insole
- Unique blend of compounds gives bounce in step and absorbs shock
- Fiberglass shank for support
- Highly slip-resistant carbon rubber outsole
- ASTM F2413-18 F/I/C EH
- Sizes 3-10, 11 B(M) and D(W)
- Extra set of laces included



RENO II

20230 BLACK

- Composite safety toe
- 100% Non-metallic
- Action leather and nylon mesh
- Waterproof membrane
- Fast rebound super cushion insole
- Unique blend of compounds gives bounce in step and absorbs shock
- Fiberglass shank for support
- Cement construction
- Highly slip-resistant carbon rubber outsole
- ASTM F2413-18 F/I/C EH
- Sizes 3-10, 11 B(M) and D(W)



LACY

70419 BROWN

70120 BLACK

- Composite safety toe
- Full-grain tumbled leather
- Suede tongue, feminine-touch reflective lace collar, reflective lace loops and side panel
- HyDry® waterproof membrane
- Premium P/U memory foam insole
- Puncture-resistant midsole
- Direct attach dual density slip-resistant outsole well suited for environments with oil, water and various chemicals on the floor
- ASTM F3445-21 Slip-resistant
- ASTM F2413-18 F/I/C EH PR
- Sizes 5-10, 11 B(M) & D(W)
- Additional colors in Moxie Trades



LILY

70423 BROWN

- Steel safety toe
- Full-grain tumbled leather
- Suede tongue and padded comfort collar
- HyDry® waterproof membrane
- Fast rebound insole
- Direct attach dual density slip-resistant outsole well suited for environments with oil, water and various chemicals on the floor
- ASTM F3445-21 Slip-resistant
- ASTM F2413-18 F/I/C EH
- Sizes 5-10, 11 B(M) & D(W)



RUSHMORE / (SOFT TOE)



93060 BROWN

- Soft toe
- Full-grain cow rancher vamp with leather shaft
- Pull handles for easy fit
- Premium P/U memory foam insole
- Goodyear welted construction
- EVA midsole
- Slip-resistant rubber outsole
- ASTM F3445-21 Slip-resistant
- ASTM F2892-18 EH
- Sizes 5-10,11 B(M)



RUSHMORE / (SOFT TOE)



93050 CHARCOAL

- Soft toe
- Full-grain cow rancher vamp with leather shaft
- Pull handles for easy fit
- Premium P/U memory foam insole
- Goodyear welted construction
- EVA midsole
- Slip-resistant rubber outsole
- ASTM F3445-21 Slip-resistant
- ASTM F2892-18 EH
- Sizes 5-10,11 B(M)



ADAH / (SOFT TOE)



93025 TAN BROWN

- Soft toe
- Full-grain aero tan printed vamp with aero tan 9" leather shaft
- Moisture wicking mesh lining
- Pull handles for easy fit
- Premium P/U memory foam insole
- Cemented construction with EVA midsole
- Slip-resistant rubber outsole
- ASTM F3445-21 Slip-resistant
- ASTM F2892-18 EH
- Sizes 5-10, 11 B(M)



HOSS INSOLE GUIDE

UPGRADE YOUR WORK DAY WITH A HOSS INSOLE

SIZES	X-SMALL	SMALL	MEDIUM	LARGE	X-LARGE	2X-LARGE	3X-LARGE	4X-LARGE
MEN'S	3 - 4 - 5	6 - 7	8 - 9	10 - 11	12 - 13	14 - 15	16 - 17	18 - 19
WOMEN'S	5 - 6 - 7	8 - 9	10 - 11					

MEMORY FOAM INSOLE STYLE 49946

Get that "ahh..." feeling when you step into your shoes with this memory foam insole. Constructed from a soft polyurethane base with gel pressure point pads and a top layer of memory foam for all day comfort.



SUPPORT INSOLE STYLE 49950

Get the support you need to withstand your work day. The TPU shell creates the support base of this insole with a Polyurethane heel shock pad. Our support insole features Popper foam at the forefoot and a blended cushion throughout with a soft foam top lining.



OUTSOLES



LORNE
LACY
CARTER
ADAM
LILY
PROWL
LACER
WORKER



STOMP
ERIC LO
ERIC HI



SCOUT
BUCK



TRAVERSE



WATCHMAN



RANGE
K-TOUGH
CARTWRIGHT II
CARSON



HUDSON



RANGER PULL ON
HOG



FRONTIER



BRONC 6"



TICKER
TIKABOO
TIKABOO MET
STEPPER MET
SPARKS SD
METEORITE



RUSHMORE
SHOWDOWN
HUNCH
LONDON
ADAH



BLIZZARD
CHILLER
BLAST



BUFORD LOGGER
CROSS CUT



EXPRESS
RENO II



WE THE PEOPLE



RIDGE
WILDFIRE



RIM FLY
FULL COURT



CHASER SD
TRACKER



POINT OF PURCHASE DISPLAY



POINT OF PURCHASE BRANDING

HOSS SLAT WALL LOGO DISPLAY

HOSS offers a metal slat wall logo display to highlight the HOSS boot area of your display wall. Please request one from your sales associate.



HOSS SLAT WALL SHELF DISPLAY

HOSS offers metal slat wall shelves to help display your HOSS boots. Please request them from your sales associate.



HOSS TABLE TOP DISPLAY

HOSS offers a metal and wood table top display that is a boot stand. Place your HOSS boot right on top. Please request one from your sales associate.



HOSS BRANDING IRON

HOSS offers branding irons in support of customer sales promotions. Please request them from your sales associate. There is limited supply. Minimum purchase required.





2024 BUYER'S GUIDE

INDEX

MOXIE TRADES53

MT20120/EXHILARATOR/BLACK/COMP.....57

MT20320/EXHILARATOR/GREY/COMP.....57

MT20518/TINA/BLACK/COMP.....60

MT21404/TRISHA/GREY/COMP.....58

MT21405/TRISHA/BLUE/COMP.....58

MT21406/TRISHA/PINK/COMP.....58

MT21407/TRISHA/TURQUOISE/COMP.....58

MT21408/TRISHA/PURPLE/COMP.....58

MT25058/ANGELINA/PINK/COMP.....59

MT26026/LACY 6"/OLIVE/COMP.....59

MT26058/LACY 6"/PINK/COMP.....59

MT50161/ALICE 6"/TAN/STEEL.....60

MT50162/ALICE 6"/PINK/STEEL.....60

MT50165/ANNE 8"/BLACK/STEEL.....60

MT50180/ZENA SLIP ON/BLACK/COMP.....61

MT50181/ZENA SLIP ON/GREY/COMP.....61

MT70127/ANGELINA/BLACK/COMP.....59



ABOUT US

Founded in 2006, Moxie Trades began with the goal of providing home renovation services primarily by teams of women. Fate intervened as the brand grew and it's direction changed to suit the needs of the market. Through sheer grit and determination, Moxie Trades has evolved into the most recognized brand of safety footwear for women in Canada.

In 2018, Moxie Trades partnered with HOSS Boot Company to expand Moxie Trades' product offering and distribute our specialized women's work boots and shoes to retailers across the United States.

The Moxie Trades story is about making the best products with the best brand with the best customer service. Not only do we sell work boots but we share moxie with women everywhere. Moxie Trades is not about the work boots, it's about the women who wear them.

Moxie is the ability to face fear with spirit and courage.

Find Your MOXIE...We Dare YOU!

Marissa McTasney
President, Moxie Trades



**WOMEN
OWNED**

MOXIE TRADES SYMBOL GUIDE



Composite toes contain non-metallic safety toe caps and are light. They are ideal for those working in electrical environments. They do not conduct heat and cold and are good for work in extreme high or low temperatures.



Aluminum toes are made of lightweight materials and tend to be about 30 to 50 percent lighter than steel. Toe boxes provide the same level of safety as steel but offer a bit more room since aluminum is thinner than composite.



Steel safety toes are the industry standard and have been for years. Steel toes provide protection from falling objects and equipment.



Moxie uses membrane technology from Tri-tex® and others. Our boots are designed to resist water in wet situations as high as the membrane goes. Wear these with confidence that your feet will stay dry and comfortable.



Our outsoles marked slip resistant have been tested and meet or surpass industrial standards. Slip resistance has many variables. These tests are to be used as a guide to help make your decision. Test results available upon request.



Electrical Hazard (EH) boots must be able to withstand 18000 volts of electricity at 60 hertz for a whole minute without leakage of more than one milliampere under dry conditions. Moxie EH boots have been tested and pass this standard.



Our flexible puncture resistant plate allows full sole coverage, as well as greater movement. This midsole plate is designed to reduce the hazards of puncture wounds caused by sharp objects penetrating the outsole.



MetGuard™ is a thermal plastic urethane shield made with XRD® Impact Protection technology. It overlays the toe box and runs to the top of the instep, for armor-like protection of the bones of the foot.



This CSA symbol indicates that the product has sole puncture protection with a Grade 1 protective toe for a heavy work environment such as construction, machine shops, or where sharp objects are present.



This symbol indicates electric-shock protective footwear.



This symbol indicates meta-tarsal protection.

EXHILARATOR



MT20120 (BLACK)

MT20320 (GREY)

- Composite Safety Toe
- Breathable mesh with TPU printed overlay toe
- Molded heel counter
- Fast rebound cushion insole
- Injected EVA dual density midsole
- Slip-resistant rubber outsole
- Meets ASTM F2413-18 F/I/C EH
- Sizes 6-10, 11 B(M)



TRISHA



MT21407 (TURQOISE)
MT21408 (PURPLE)



MT21404 (GREY)

MT21405 (BLUE)

MT21406 (PINK)

- Composite Safety Toe
- Suede, printed leather and fabric
- Padded collar for comfort
- Fast rebound cushion insole
- Injected EVA dual density midsole
- Slip-resistant rubber outsole
- Meets ASTM F2413-18 F/I/C EH
- Sizes 6-10, 11 B(M)



ANGELINA



MT25058 (PINK) MT70127 (BLACK)

- Composite safety toe
- Pink full-grain nubuck leather
- Black full grain leather
- Soft cushion insole
- Puncture-resistant midsole
- Direct attach PU/PU slip-resistant outsole
- ASTM F3445-21 Slip-resistant
- ASTM F2413-18 F/I/C EH PR
- CSA Approved Grade 1
- Sizes 6-10, 11 B(M)



LACY



MT26058 (PINK) MT26026 (OLIVE)

- Composite safety toe
- Full-grain nubuck leather, suede tongue, feminine-touch lace collar
- Reflective padded collar & lace loops
- Hydry waterproof membrane
- Dual-density rebound foam insole
- Puncture-resistant midsole
- Direct attach PU/PU slip-resistant outsole
- ASTM F3445-21 Slip-resistant
- ASTM F2413-18 F/I/C EH PR
- CSA Approved Grade 1
- Sizes 5-10, 11 B(M) (5.5 Available)
- Additional colors in HOSS



TINA

MT20518 (BLACK)



- Composite safety toe
- Full-grain leather with reflective padded collar
- Hydry waterproof membrane
- Dual-density rebound foam insole
- XRD internal metatarsal guard
- Puncture-resistant midsole
- Direct attach PU/PU slip-resistant outsole
- ASTM F3445-21 Slip-resistant
- ASTM F2413-18 F/I/C EH MT PR
- CSA Approved Grade 1
- Sizes 5-10, 11, 12, 13



REFLECTIVE
PADDED COLLAR

ALICE



MT50162 (PINK) MT50161 (TAN)

- Steel safety toe
- Full-grain, soft nubuck leather
- Tri-tex® waterproof breathable lining
- Cushion foam insole
- Puncture-resisting midsole
- Direct attach PU/PU slip-resistant outsole
- Extra black lace in box for pink and tan
- ASTM F3445-21 Slip-resistant
- ASTM F2413-18 F/I/C EH PR
- CSA Approved Grade 1
- Sizes 5, 6-10, 11



ANNE 8"

MT50165 (BLACK)



- Steel safety toe
- Black leather
- Tri-tex® waterproof breathable lining
- Cushion foam insole
- Puncture-resistant midsole
- Direct attach PU/PU slip-resistant outsole
- ASTM F3445-21 Slip-resistant
- ASTM F2413-18 F/I/C EH, PR
- CSA Approved Grade 1
- Sizes 5, 6-10, 11



ZENA SLIP ON

MT50180 (BLACK)

MT50181 (GREY)

- Composite safety toe
- Rubber bumper toe for durability
- Knit fabric
- Memory foam insole
- Slip and oil-resisting outsole
- ASTM F2413-18 EH
- Sizes 5, 6-10, 11 D(W)



VEGAS HIKER

MT50121 (BLACK)

- Aluminum safety toe
- Black leather
- Tri-tex® waterproof breathable lining
- Puncture-resistant plate
- Slip-and oil-resistant outsole
- ASTM F3445-21 Slip-resistant
- ASTM F2413-18 EH PR
- CSA Approved Grade 1
- Sizes 5, 6-11 D(W) (10.5 Available)



OUTSOLES

TRISHA
EXHILARATOR



TINA
LACY
ANGELINA



ANNE 8"



VEGAS HIKER



ALICE



ZENA



CONTACT US

888-990-4677

HOURS: MONDAY-FRIDAY 8AM-5PM EST

DIEHARDFOOTWEAR.COM

HOSSBOOTS.COM

EMAIL ORDERS: CSORDERS@HOSSBOOTCO.COM



DieHard



HOSS
BOOT COMPANY



MOXIE TRADES

